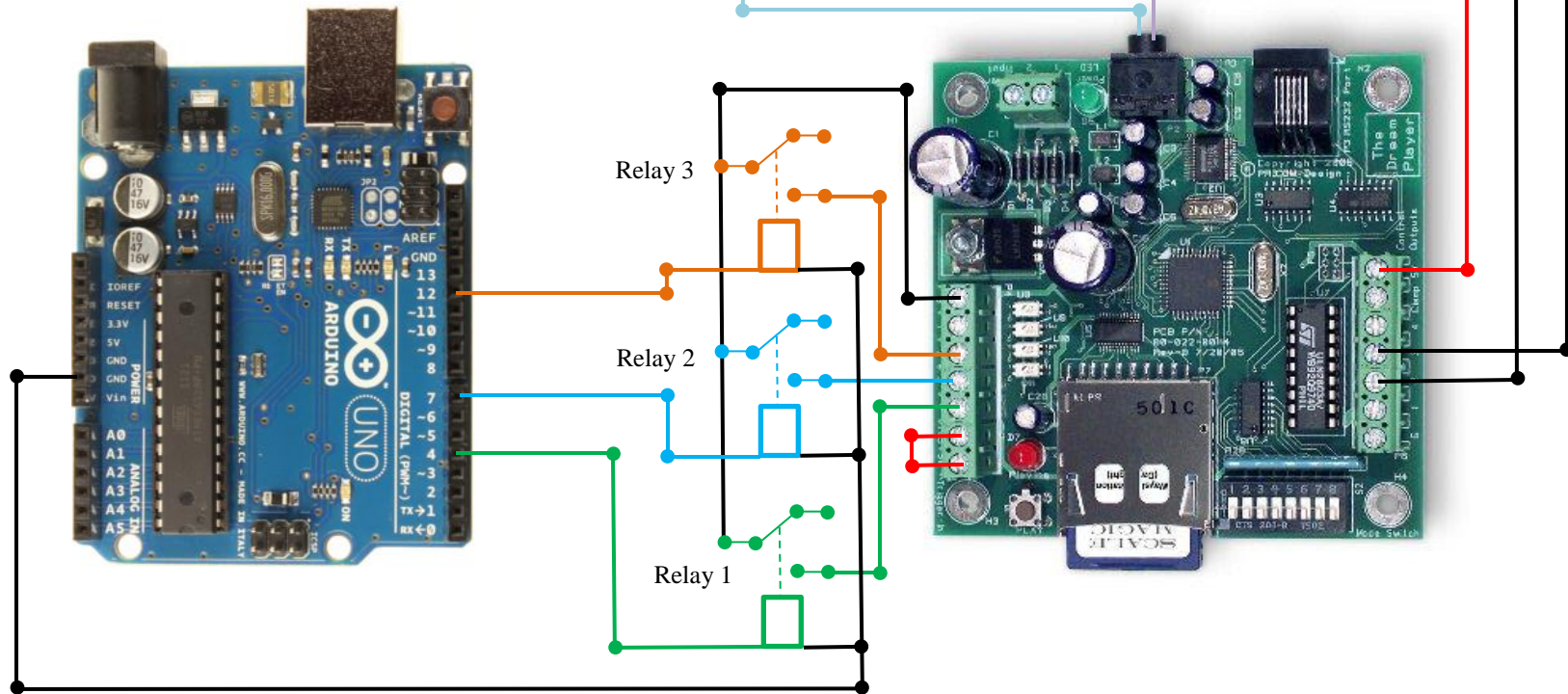


Audio Player Control Diagram

Dream Player uses negative terminal to activate sound file. Relays are required for this task since Arduino high is positive. A relay between each speaker allows the sound file to be played at progressive points along the wall. The speaker relays get power from the Dream Player as the sound file is played.



Parts List:

1. Arduino Uno
2. Pricom DreamPlayer
3. One 4 channel relay module
4. One 2 channel relay module must have 5vdc in
5. Wire and mounting hardware
6. Amp and speakers

Arduino Pinger Project

February 9, 2014

Tim Whitson
The Fool's Quarter

twhitson@foolsquarter.com
<http://www.foolsquarter.com>